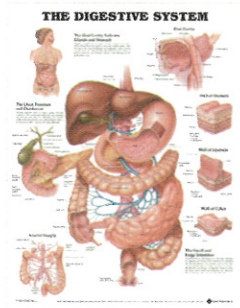


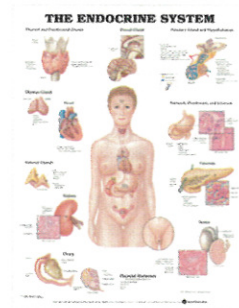
Anatomical Charts

SYSTEMS OF THE HUMAN BODY

Peter Bachin Anatomical Charts are highly detailed, 4-color lithograph charts. Ideal for student, school and professional use. Each chart measures 20" x 26" and is lightly laminated (1 1/2 mil).



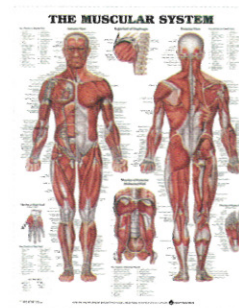
The Digestive System
#6010.....\$16.95 ea



The Endocrine System
#6011.....\$16.95 ea



The Lymphatic System
#6012.....\$16.95 ea



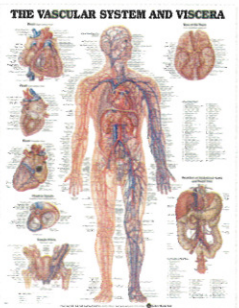
The Muscular System
#6013.....\$16.95 ea



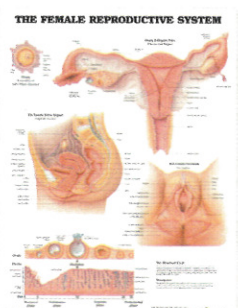
The Nervous System
#6014.....\$16.95 ea



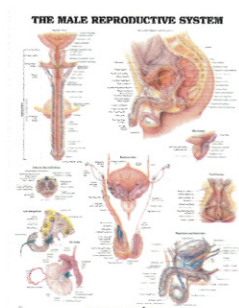
The Skeletal System
#6015.....\$16.95 ea



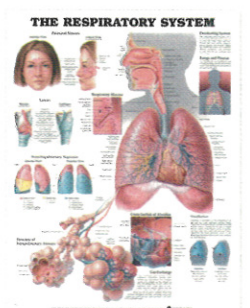
The Vascular System & Viscera
#6016.....\$16.95 ea



The Female Reproductive System
#6032.....\$16.95 ea

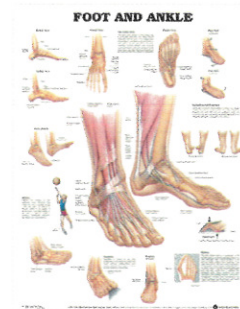


The Male Reproductive System
#6034.....\$16.95 ea



The Respiratory System
#6066.....\$16.95 ea

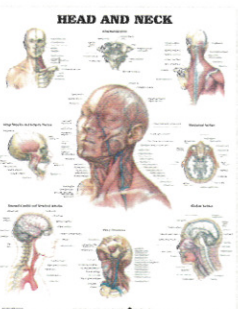
PARTS OF THE HUMAN BODY



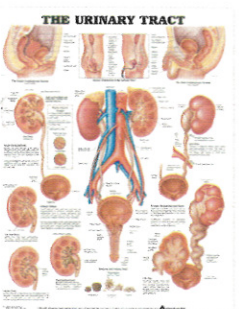
Foot and Ankle
#6020.....\$16.95 ea



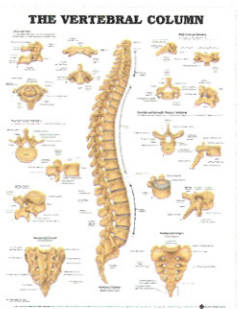
Hand and Wrist
#6021.....\$16.95 ea



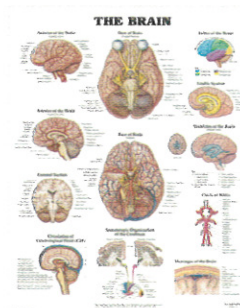
Head and Neck
#6022.....\$16.95 ea



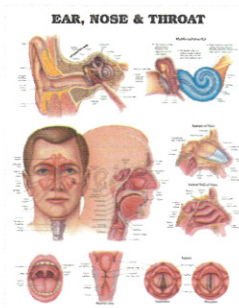
The Urinary Tract
#6026.....\$16.95 ea



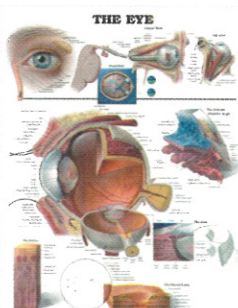
The Vertebral Column
#6027.....\$16.95 ea



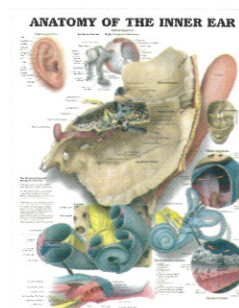
The Brain
#6040.....\$16.95 ea



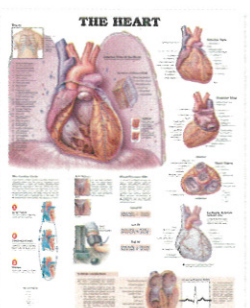
Ear, Nose & Throat
#6041.....\$16.95 ea



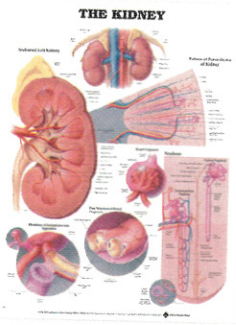
The Eye
#6042.....\$16.95 ea



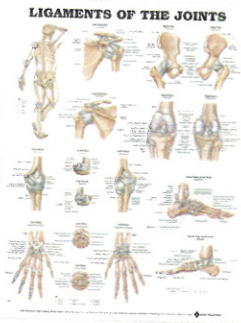
Anatomy of the Inner Ear
#6028.....\$16.95 ea



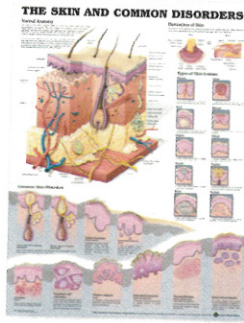
The Heart
#6044.....\$16.95 ea



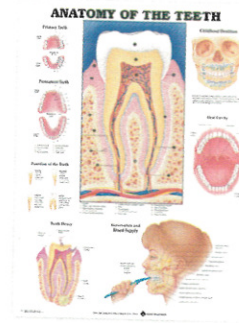
The Kidney
#6045.....\$16.95 ea



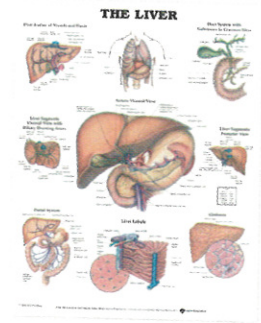
Ligaments of the Joints
#6046.....\$16.95 ea



The Skin and Common Disorders
#6047.....\$16.95 ea



Anatomy of the Teeth
#6048.....\$16.95 ea

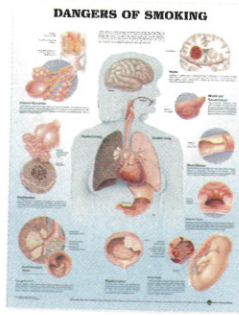


The Liver
#6067.....\$16.95 ea

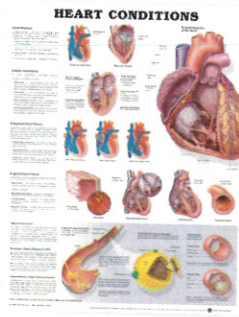
CONDITIONS OF THE HUMAN BODY



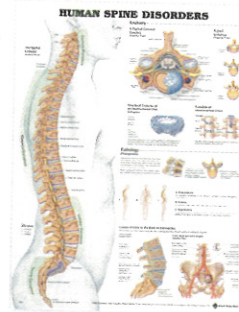
Dangers of Alcohol
#73046.....\$16.95 ea



Dangers of Smoking
#73056.....\$16.95 ea



Heart Conditions
#6068.....\$16.95 ea



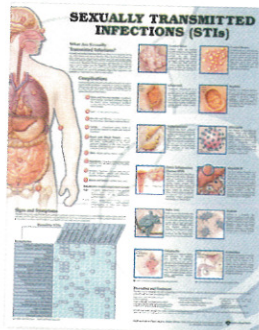
Human Spine Disorders
#6025.....\$16.95 ea



Middle Ear Conditions
#6038.....\$16.95 ea



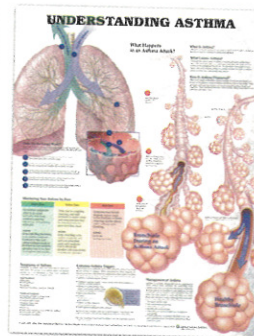
Pregnancy and Birth
#6035.....\$16.95 ea



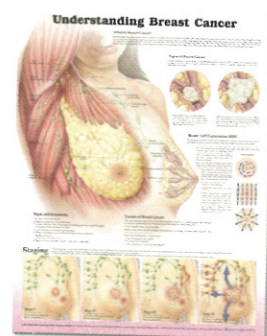
Sexually Transmitted Infections (STIs)
#6065.....\$16.95 ea



Understanding Allergies
#6049.....\$16.95 ea



Understanding Asthma
#6061.....\$16.95 ea



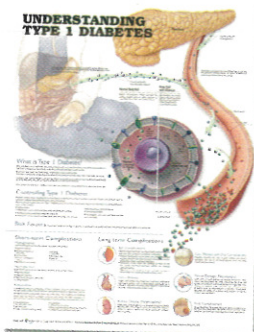
Understanding Breast Cancer
#6074.....\$16.95 ea



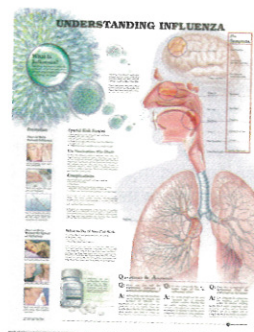
The Common Cold
#6039.....\$16.95 ea



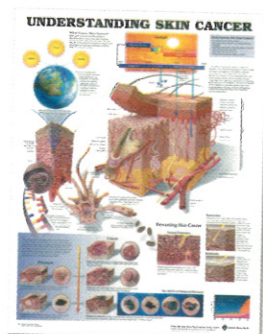
Understanding Depression
#6075.....\$16.95 ea



Understanding Type 1 Diabetes
#6062.....\$16.95 ea



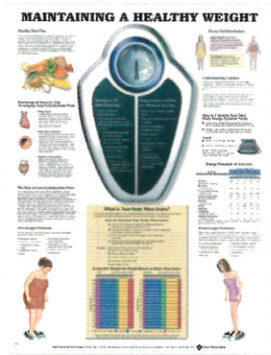
Understanding Influenza
#6029.....\$16.95 ea



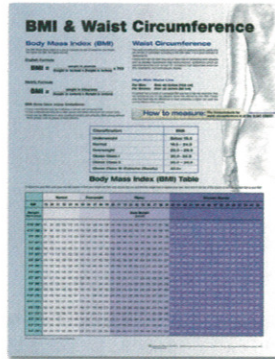
Understanding Skin Cancer
#6069.....\$16.95 ea

Nutrition Charts & Drug Education Posters

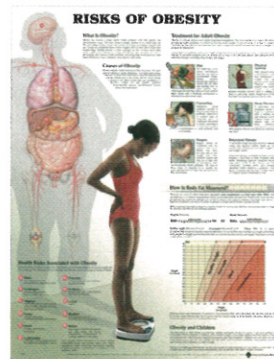
HEALTH AND NUTRITION POSTERS



Laminated
Maintaining A Healthy Weight
Poster 20"W x 26"H
#6037.....\$16.95 ea



Laminated
BMI & Waist Circumference
Poster 20"W x 26"H
#6151.....\$16.95 ea



Laminated
Risks of Obesity Poster
20"W x 26"H
#6071.....\$16.95 ea



Laminated
Keys to Healthy Eating Poster
20"W x 26"H
#6072.....\$16.95 ea



NUTRITION AND HEALTHY WEIGHT CHART SET

Includes a nutrition chart of vitamins and essential elements, as well as two laminated charts: Maintaining A Healthy Weight and Keys to Healthy Eating.

#6150 Complete Set of 2.....\$27.50 set



SPACE-SAVER DISPLAY

This display unit allows you to display up to 18 charts at once. Fully adjustable, you have the option to make it a floor model (17" x 60") or table-top model (17" x 30"). For use with Peter Bachin Anatomical Charts and Kate Sweeney Elementary Health Charts only.

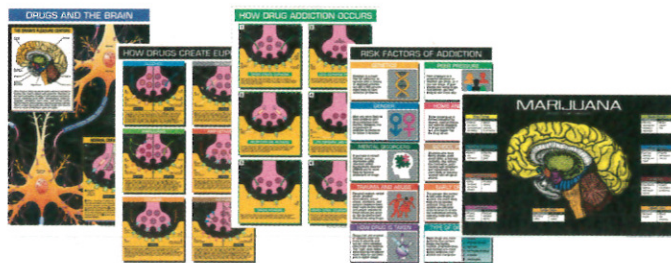
#6095 Display.....\$329.00 ea



PORTABLE CHART STAND

This lightweight, aluminum stand holds up to 25 laminated charts. Two adjustable, floating rings allow you to flip through the charts with ease. For use with Peter Bachin Anatomical Charts and Kate Sweeney Elementary Health Charts only. Size: 28" x 53".

#6097 Portable Chart Stand.....\$129.00 ea



DRUG EDUCATION POSTERS

These Drug Education Posters are geared towards middle and high school students. They provide information on what drugs and addiction can do to the body. Each poster is 24" x 36" and laminated.

- #72100 Drugs And The Brain.....\$24.95 ea
- #72101 How Drugs Create Euphoria.....\$24.95 ea
- #72102 Marijuana And The Brain.....\$24.95 ea
- #72103 How Drug Addiction Occurs.....\$24.95 ea
- #72104 Risk Factors of Addiction.....\$24.95 ea



CPR & AED AND CHOKING POSTER PACK

Six full-color posters (11" x 17") that feature clear, easy-to-understand, step-by-step instructions for CPR & AED and relieving airway obstructions.

#73000 6-Pack.....\$34.00 ea

KATE SWEENEY ELEMENTARY HEALTH CHARTS

"Blueprint for Health" series charts are colorfully detailed for elementary health education. Each chart measures 20" x 26" and is lightly laminated 1 1/2 mil.



Your Brain and Nerves
#61109.....\$16.95 ea



Your Digestive System
#61119.....\$16.95 ea



Your Ears Hearing and Balance
#61129.....\$16.95 ea



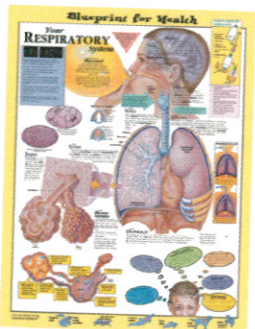
Your Eyes
#61139.....\$16.95 ea



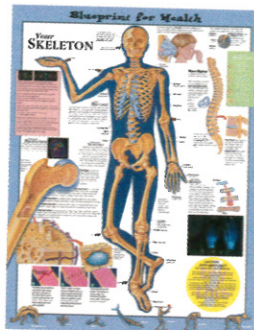
Your Heart and Blood
#61149.....\$16.95 ea



Your Muscles
#61159.....\$16.95 ea



Your Respiratory System
#61169.....\$16.95 ea



Your Skeleton
#61179.....\$16.95 ea



Your Taste and Smell
#61189.....\$16.95 ea



Complete Set of 9
#61199.....\$108.00 set

CHOKING & CPR CHARTS

Complete guidelines for explaining and showing the proper procedures for emergency situations. The self-instructional charts depict techniques for what to do until medical assistance arrives. Charts come in your choice of full-color lightly laminated (18" x 24", 1 1/2 mil), full-color paper (18" x 24"), or black and white tear pad (11" x 15", 50 per pad). 2013 guidelines.



Choking: Child
Color Paper
#6133.....\$12.95 ea
Color Laminated
#6122.....\$18.95 ea
Black & White (50/pad)
#6142.....\$9.95 pd



Choking: Adult
Color Paper
#6132.....\$12.95 ea
Color Laminated
#6123.....\$18.95 ea
Black & White (50/pad)
#6145.....\$9.95 pd



CPR: Infant
Color Paper
#6134.....\$12.95 ea
Color Laminated
#6124.....\$18.95 ea
Black & White (50/pad)
#6146.....\$9.95 pd



CPR: Child
Color Paper
#6135.....\$12.95 ea
Color Laminated
#6125.....\$18.95 ea
Black & White (50/pad)
#6147.....\$9.95 pd



CPR: Adult
Color Paper
#6136.....\$12.95 ea
Color Laminated
#6126.....\$18.95 ea
Black & White (50/pad)
#6148.....\$9.95 pd

FIRST AID CHART

Complete guidelines for explaining and showing the proper procedures for emergency situations. The self-instructional chart depicts techniques for what to do until medical assistance arrives. This chart comes in your choice of full-color, lightly laminated (18" x 24", 1 1/2 mil) or full-color paper (18" x 24"). 2013 guidelines.

Color Paper
#6152.....\$12.95 ea
Color Laminated
#6153.....\$18.95 ea



School Nurse Supply offers current CPR & Choking charts, as the guidelines are updated.